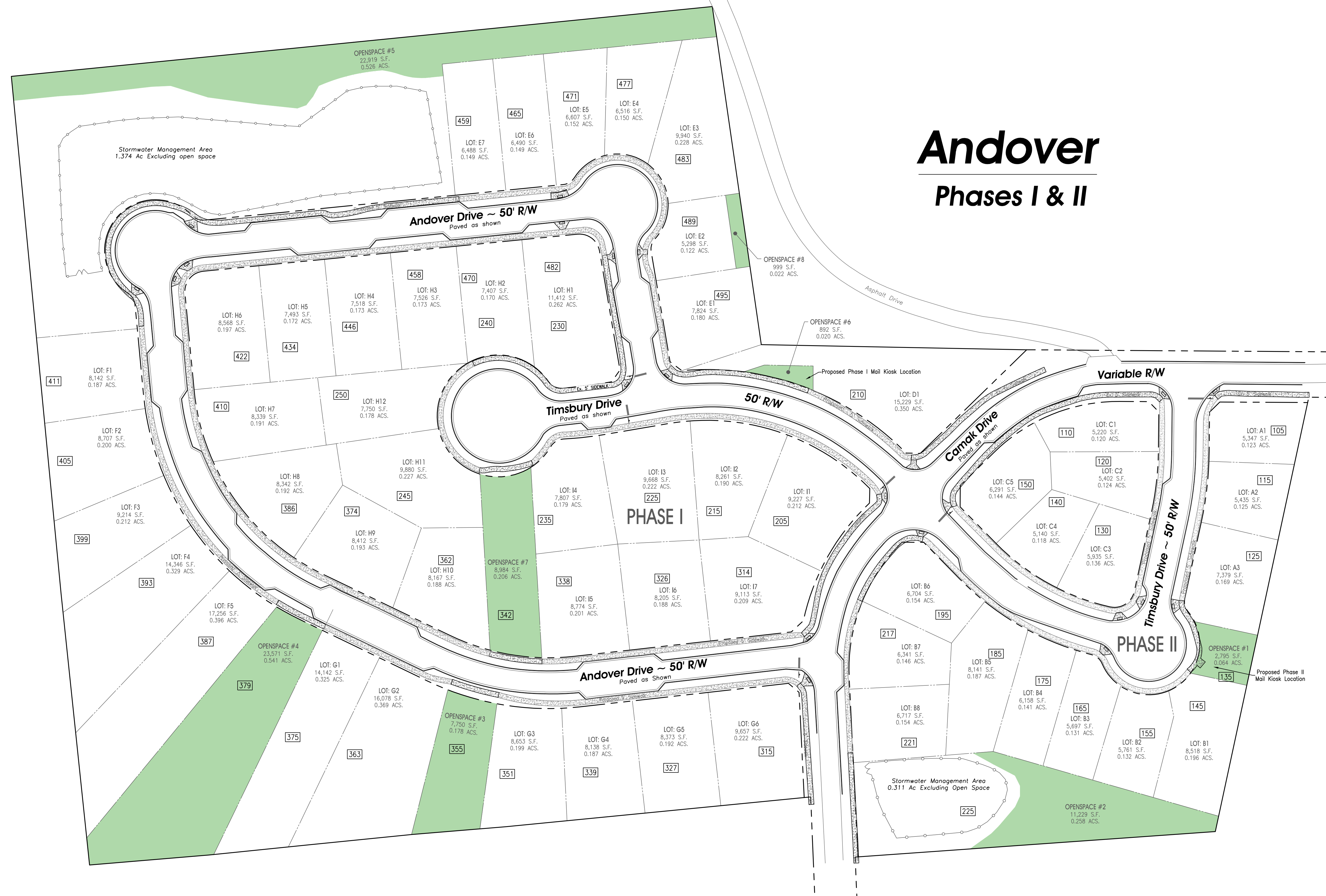


**Legend of Survey Abbreviations/Symbols**

B.S.L.	Building Setback Line
CL	Centerline
CRSF	Capped Rebar Found
CMP	Corrugated Metal Pipe
CTF	Crimp Top Pipe Found
DB	Dead Book
D.E.	Drainage Easement
DIP	Ductile Iron Pipe
FND	Found
H/C	Handicap
JB	Junction Box
IPS	1/2" Capped Rebar Set
O.C.S.	Stamped LSF 1010
OTF	Outlet Control Structure
P	Property Line
PB	Plot Book
PKF	PK Nail Found
PKS	PK Nail Set
POB	Point of Beginning
POC	Point of Commencement
PVC	Polyvinyl Chloride Pipe
RCP	Reinforced Concrete Pipe
R/W	Right-of-Way
RFB	Rebar Found
SMH	Sanitary Sewer Manhole
TP	Tax Parcel Number
○	1/2" Capped Rebar Set
○	Stamped LSF 1010
○	(Unless otherwise noted) Iron Pin Found
○	(As described) Computed Point (No pin)
○	Single Wing Catch Basin
○	Double Wing Catch Basin
○	Stop Sign
○	Sanitary Sewer Manhole
○	Storm Sewer Manhole
○	Light Pole
○	Utility Pole
○	Electric Sub
○	Electric Transformer
○	Communications Riser
○	Existing Fire Hydrant
○	Water Sub
○	Overhead Utilities
○	Sanitary Sewer
○	Numeric Street Address
○	Existing Tree
○	Proposed Tree



# Andover

## Phases I & II



COMPREHENSIVE ENGINEERING SERVICES  
 CIVIL ENGINEERING  
 LAND SURVEYING  
 LAND PLANNING  
 CONSTRUCTION STAKING  
 LANDSCAPE ARCHITECTURE  
 SOIL MAPPING & SEPTIC SYSTEMS  
 WETLAND & ENVIRONMENTAL MONITORING

2410 HOG MOUNTAIN ROAD  
 SUITE 103  
 WATKINSVILLE, GA 30677  
 706-613-8900  
 706-425-9631 (FAX)  
 abe@abeconsultinginc.com  
 www.ABEconsultinginc.com

Addressing Plan for:  
**Keystone Custom Homes, LLC**  
 Camak Drive  
 Athens, Georgia  
 Clarke County  
 1347th G.M.D.

Being those parcels of land described in  
 Deed Book 4978 pg 383, Clarke County, Ga

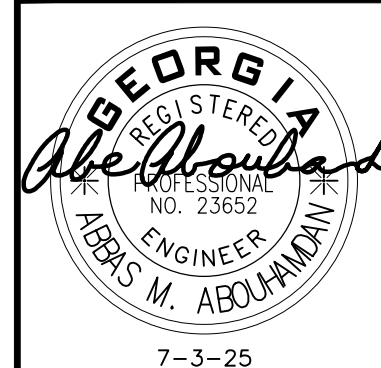
Total Project Area: 17.022 Acres  
 Tax Parcel #s: 111A 008, 111A 009  
 & 111A 010  
 Existing Zoning: RS-5 & RS-8

COPYRIGHT © 2025 ABE CONSULTING, INC. RESERVES COPYRIGHT AND OTHER RIGHTS TO THE STRICT USE OF THESE DOCUMENTS FOR THE ORIGINAL PROJECT FOR WHICH THEY WERE INTENDED. ANY CHANGES OR ALTERATIONS MADE TO THIS MAP OF SURVEY WITHOUT THE WRITTEN APPROVAL OF ABE CONSULTING, INC. VIOLATES THE SEAL SHOWN HEREON AND ANY LIABILITY ASSOCIATED WITH THIS PROJECT. THE ORIGINAL DRAWINGS ARE KEPT ON FILE FOR VERIFICATION OF ANY CHANGES, REPRODUCTIONS, MODIFICATIONS, OR ASSIGNMENTS ARE STRICTLY PROHIBITED.

### Addressing Plan

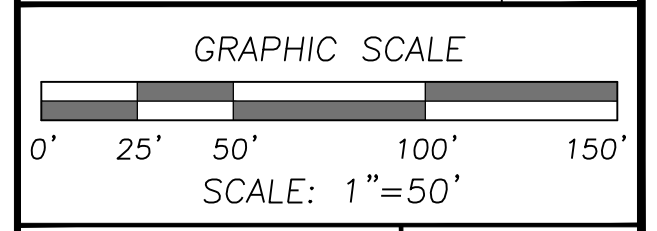


**COLORS FOR UTILITY LOCATING:**  
 White = Prop. Excavation  
 Pink = Temp. Survey Markings  
 Red = Electric  
 Yellow = Gas/Oil  
 Orange = Phone/Cable  
 Blue = Water  
 Purple = Reclaimed Water  
 Green = Sewer



DATE PREPARED:  
 7-3-25  
 PROJECT #:  
 05-049-02

REVISIONS	DATE



Grid North  
 Georgia West Zone

**SHEET #**  
 1  
 1

Z:\PROJECTS\05-049-02 ANDOVER WRENBURY JOHN O WEST\PROJECT DRAWINGS\ADDRESSING PLAN-7-3-25.DWG